

TrolMaster

Room Group Layout

Overview

TrolMaster is constantly finding new ways to improve our products. Recently we released the NFS-2 / Aqua-X Pro controller and it has been met with great enthusiasm. Based on initial customer feedback, we are proud to announce a simple yet extremely useful function that is available by updating the NFS-2 to the newest firmware. It is called the Room Group Layout.

The NFS-2 provides features that allow it to be used to monitor and control multiple rooms, water tanks, and Dosatron auto-dosers. Because of the NFS-2's ability to be used in multiple rooms.... where you have multiple sensors measuring pH, EC, water temperature, water-flow, water content, medium EC and temperature, not to mention the multiple device control modules controlling pumps and solenoids, you'll need an easy way to be able to organize each sensor and device that is being used. Mission accomplished... We created a way to sort these devices into individual Room Groups.

When you normally view multiple sensor & probe data on the standard NFS-2 screens, all of the available info is shown on a single page. That can become confusing if you have a lot of sensors and devices being used in a complex fertigation control system. By separating those sensors and devices into separate "Rooms" the user can see the information within each room clearly. Each room name can be customized to make it easier to visualize all of the sensors and devices in each room. You can create separate room groups on the following NFS-2 pages.... Reservoir, Medium, Flow Meter, Solenoids, and Pumps.

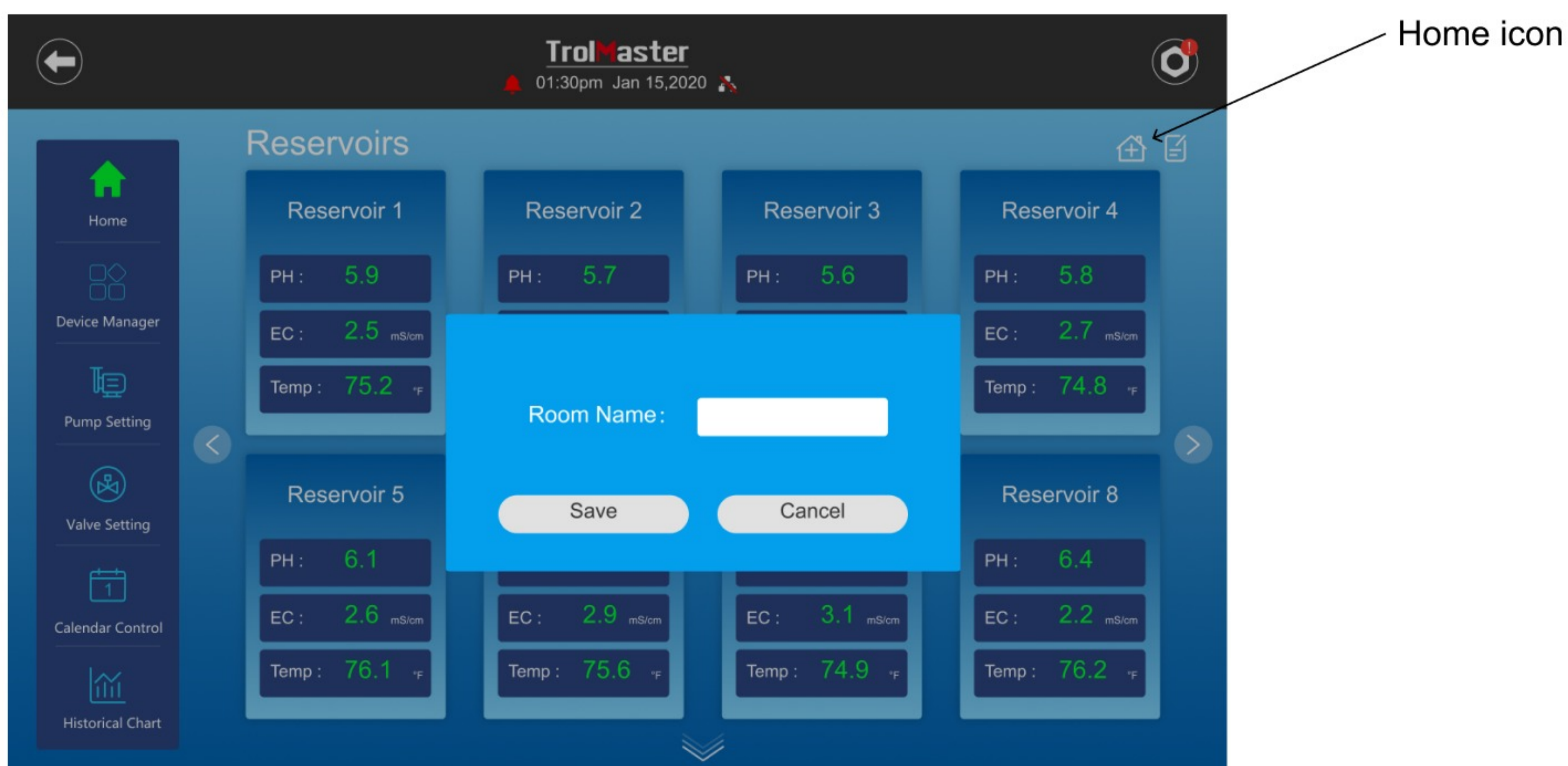
Let me show you how easy it is to organize your NFS-2 sensors and devices into separate rooms.

First let's look at the Reservoir page. If you have multiple AMP-3 modules connecting the pH & EC probes to the NFS-2 controller, the page may have several blocks showing each sensor's data.



Instead of having all of the info on a single page, we can separate the info by creating a room block to easily recall data only from that room.

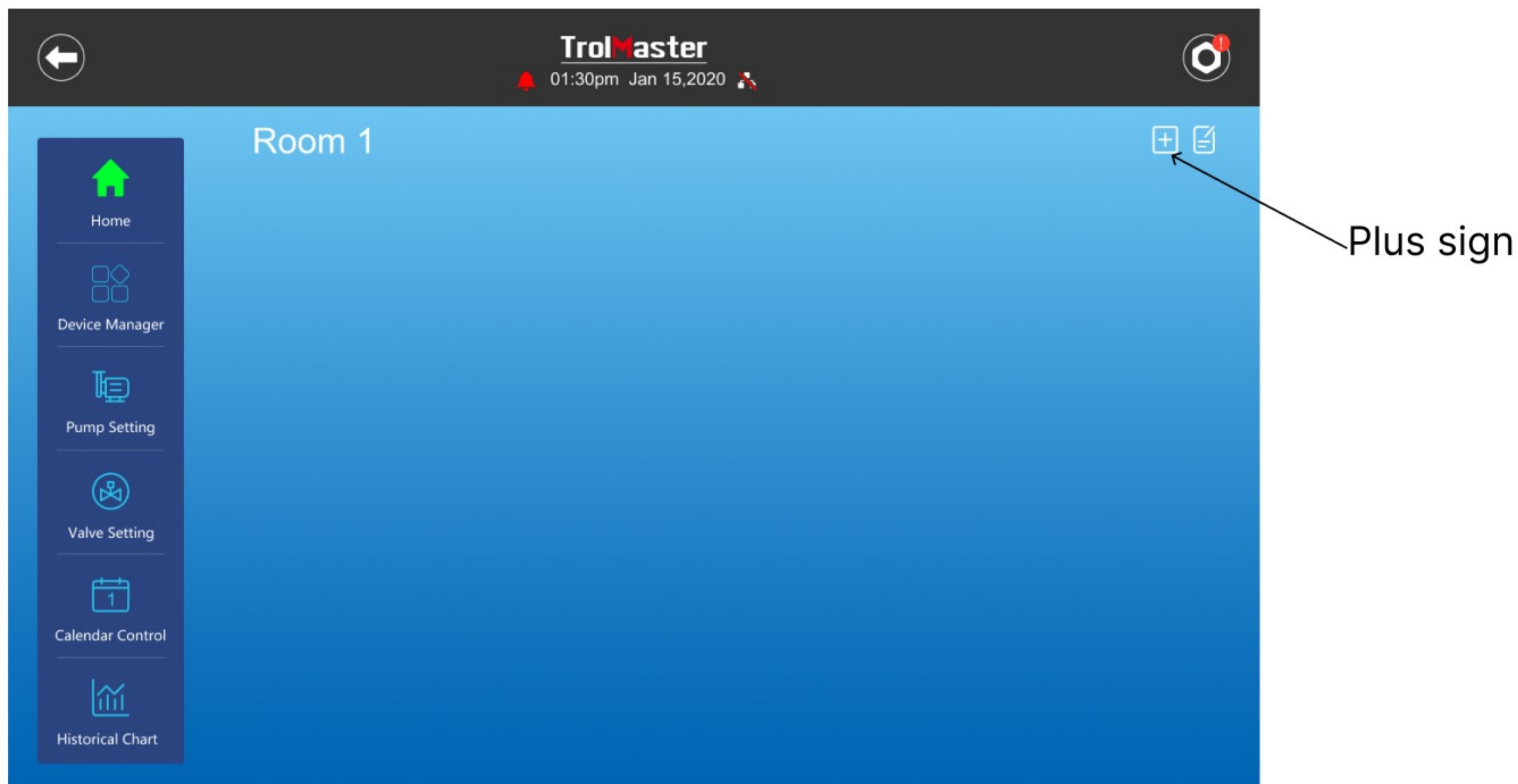
Touch the HOME icon on the top right corner of the screen. The page will say: Room Name... Room 1. You can change the room name if you want and then click on Save. We will leave this one as Room 1 for now.



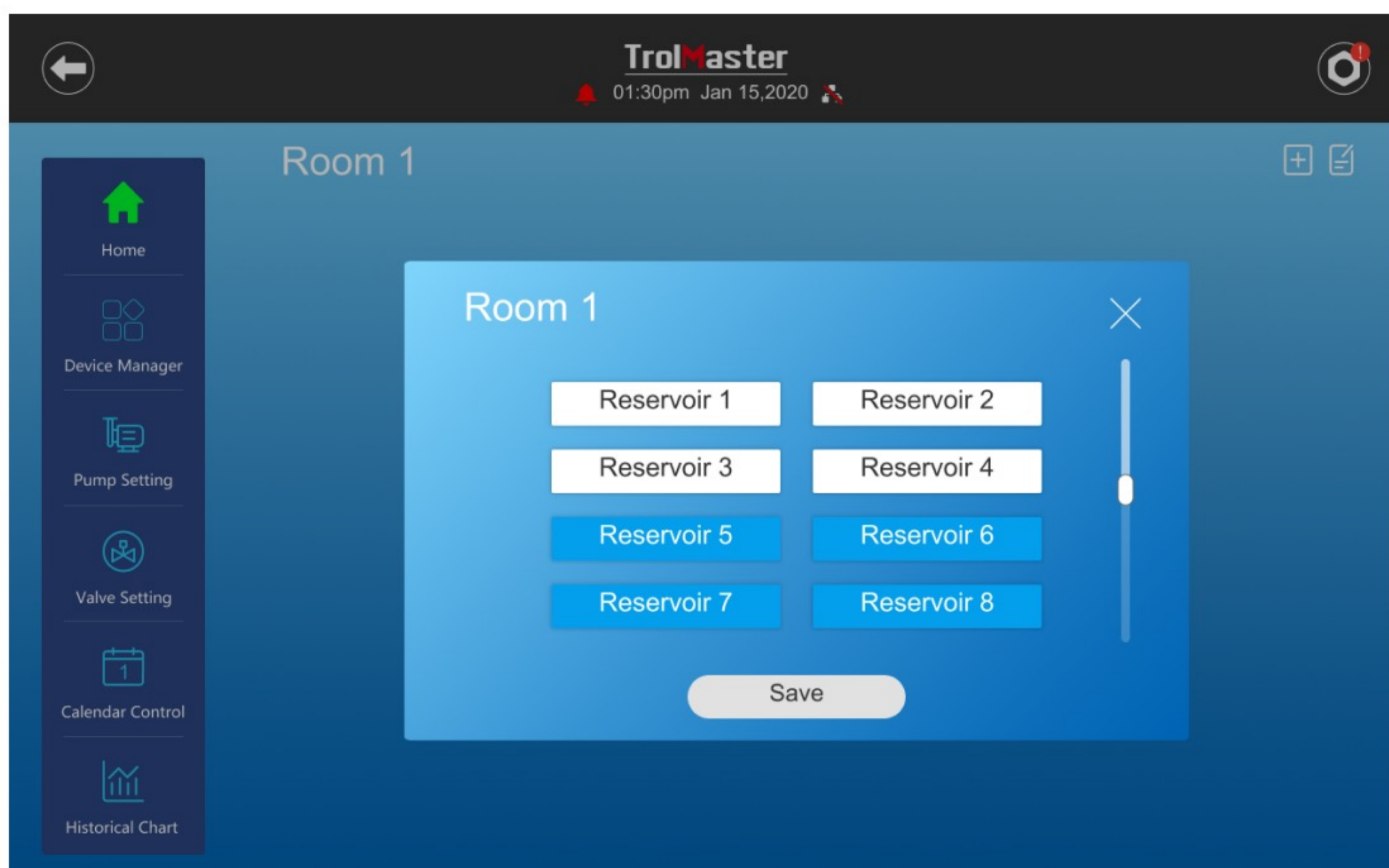
When you touch Save, you will now see a new block on the Reservoir page called Room 1.



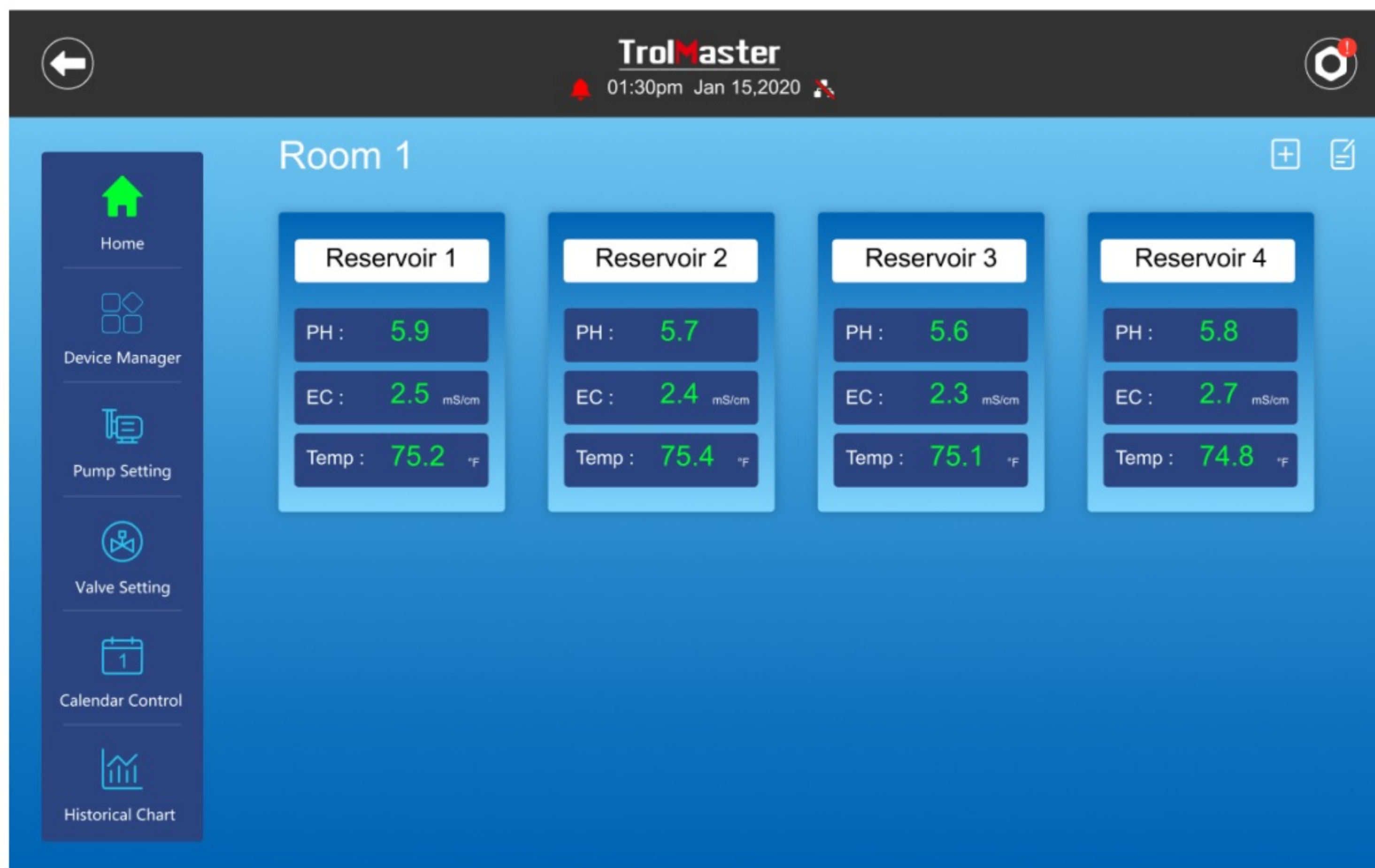
If you now touch the Room 1 block, the screen will show you that you currently have no Reservoir sensors assigned to your Room 1. Touch the Plus sign + icon on the top right.



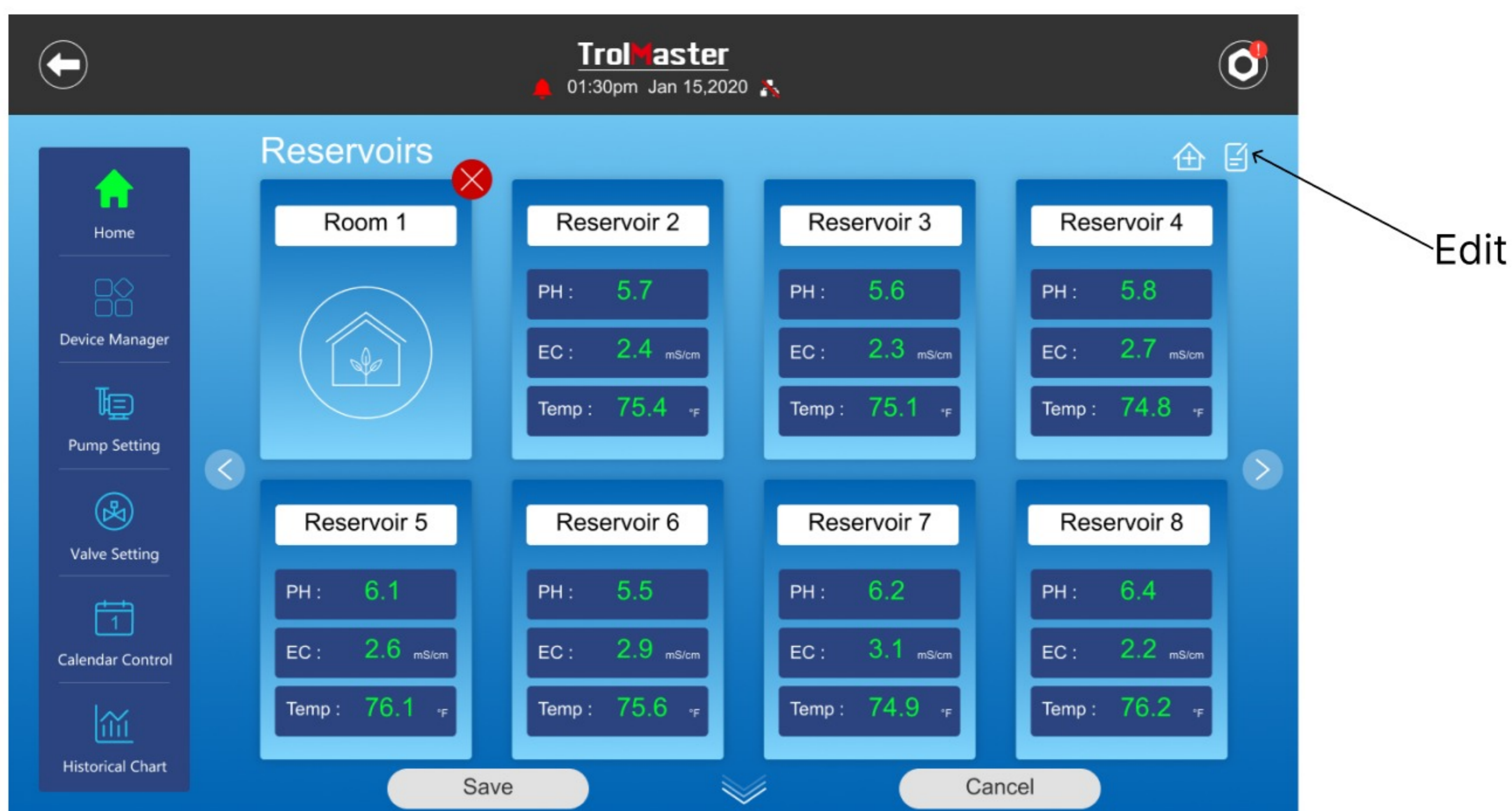
Now you can select which of the AMP-3 / Reservoir probes you want to assign to Room 1. When you have selected all of the reservoir probes you want to place in Room 1, touch SAVE.



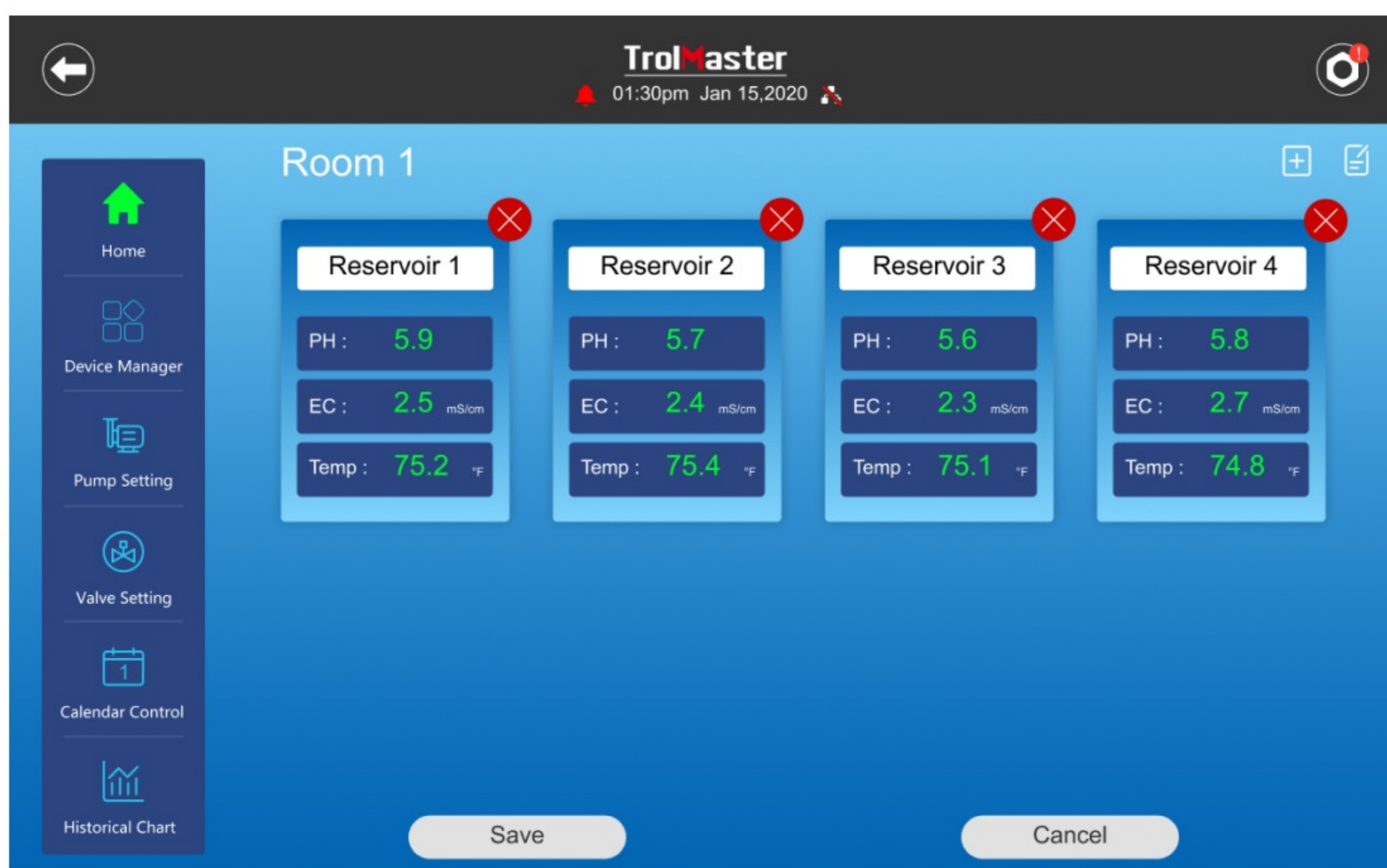
Now when you go back, and then click on the Room 1 block, you will see the AMP-3 probes are now stored within your Room 1 block. To add additional rooms and to separate other AMP-3 sensors into their rooms, simply repeat the process here using Rooms 2, 3, 4 ect.



You can also remove rooms by tapping on the edit button on the top right side of the screen. Tap on the red "X" button to remove the room. When you remove a room, all the reservoirs in that room will be moved to the front page.



The same steps can be applied to remove a reservoir from a room. Once you've removed a reservoir from the room, it will go back to the home page.



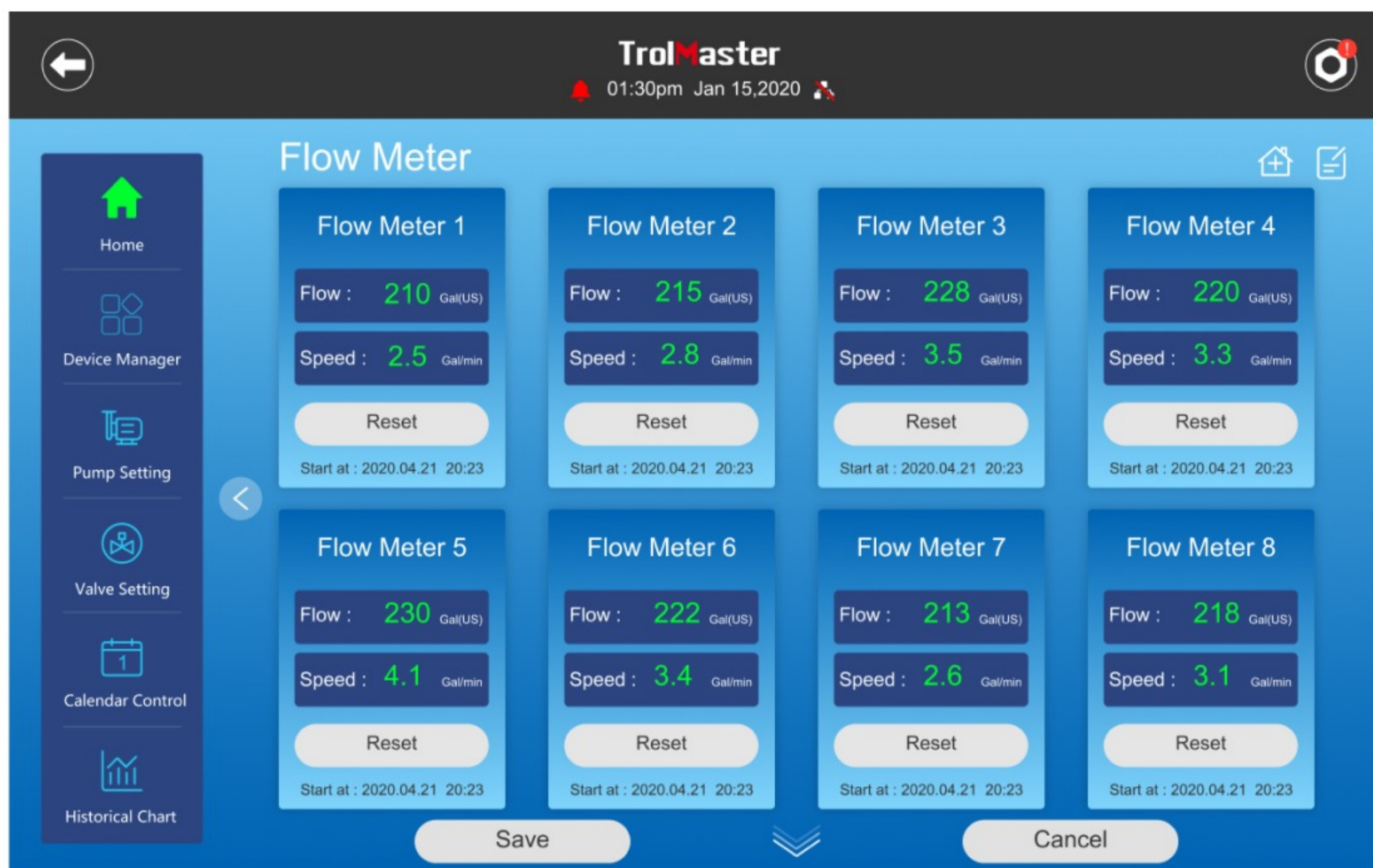
You can also choose to create Room Groups for your other sensors including Medium and Flow-Meters by creating Room Groups on those pages, and then linking those sensors to each Room as we did for the Reservoir sensors. Each sensor page can have Room Groups displayed, or the user might choose to allow some sensors to be viewed on a single screen by choosing not to separate the sensors into Room Groups.

Tap on the right arrow to access the Medium and Flow meter homepage:

Medium home page:

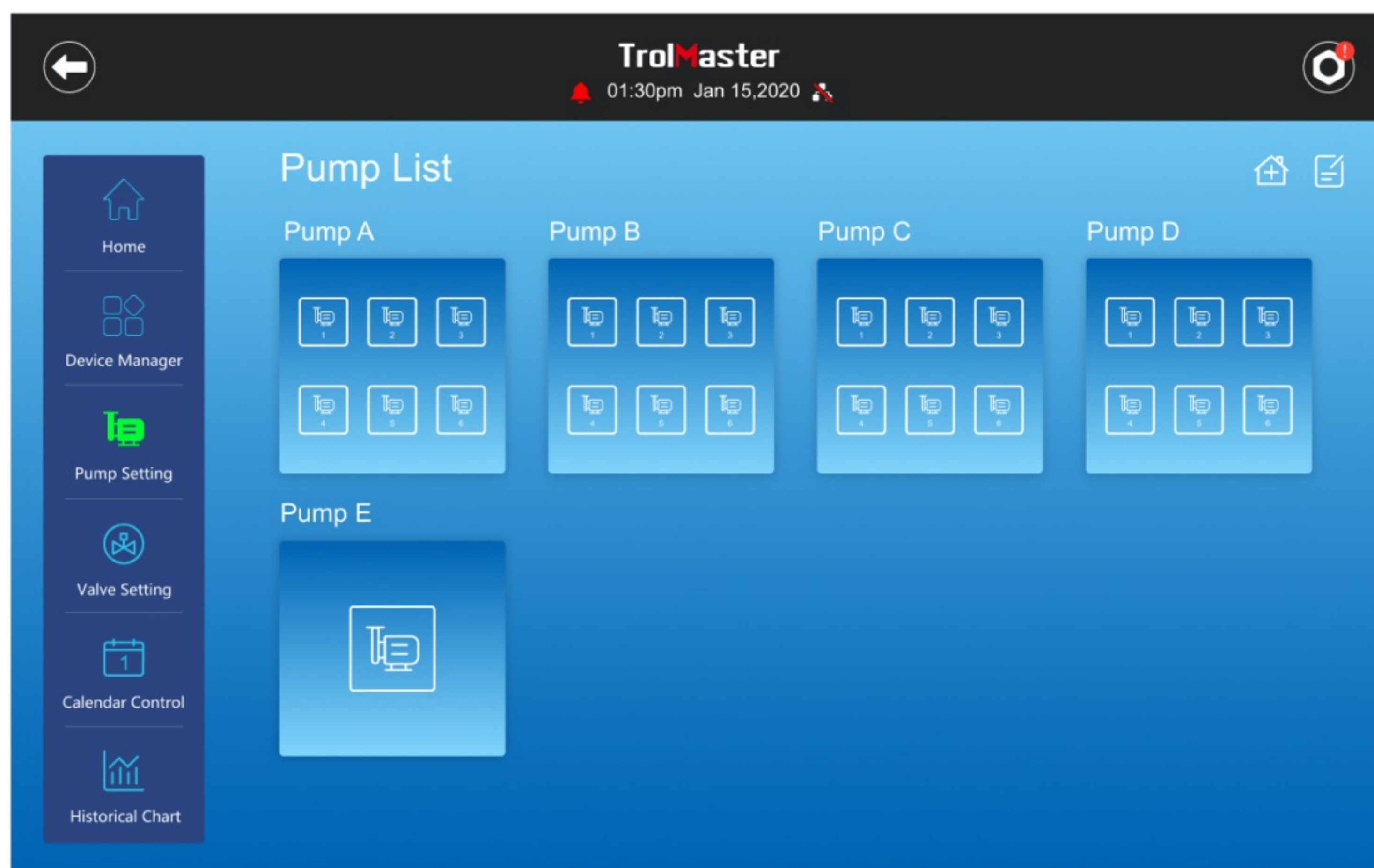


Flow Meter home page:

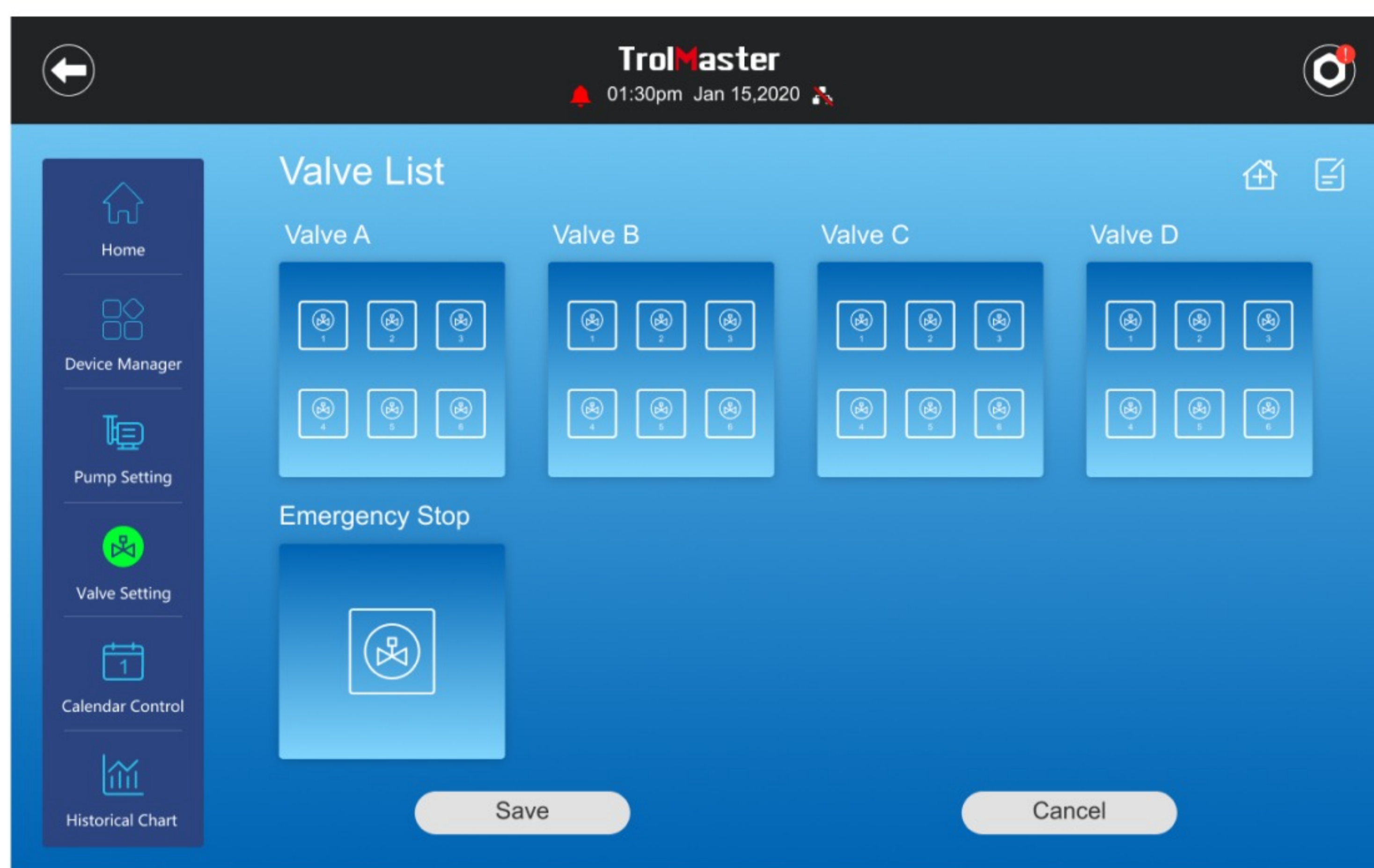


You can also group your pumps and solenoids into separate Room Groups. When selecting the devices to group into separate rooms, go to the Solenoids or the Pumps page, and create Rooms just like we did for the sensors and probes. (Pictures on next page)

Pump Page:



Valve Page:



Once you have created a Room Group, you touch the Room block, and then touch the plus sign + to add each of the pumps or solenoids to your Room block. Please note that when adding your OA6-24 / 24-volt control boards to each Room Group, you MUST select the entire OA6-24 board. When using the OM-8 module, you can selectively add individual outputs from the OM-8 into your Room Groups.

Now that you have separated your sensors and devices into multiple individual Room Groups, you can easily navigate directly to the info and settings you want to view without having to scroll and search for the correct info and / or settings.